

Certification:

All Kattle Trail products are certified by the USDA as Process Verified Programs for Animal Data Collections and Reporting. The Process Verified Program designation means we have received independent verification that documented policies and procedures are in place to ensure the integrity and security of the data collected with our systems. Confirmed through third-party audits, the Kattle Trail system is the first USDA-approved service providing individual animal identification and life history tracking services. With this prestigious designation, you can be assured that your complete Kattle Trail experience will be of the highest quality – all the time, every time.

*For more information on
Kattle Trail, please visit us at:
www.minmixminerals.com*

Kattle Trail

**A Program for the Cattleman of Today –
Providing Information to Insure the
Profitability of Tomorrow**

Kattle Trail is a program especially designed to allow for the collection and management of information that will make your cattle operation more profitable as well as being able to electronically track your cattle. The use of the **Kattle Trail** program will also allow you to obtain your premise ID number that will soon be required of all producers.

Each animal enrolled in the **Kattle Trail** program is provided an EID tag to be placed in the animal's ear. Your corresponding ranch tag number is then "married" to the EID tag number and all data collected on that individual animal will be entered into the **Kattle Trail** program. Informational reports with a nearly unlimited number of informational fields will be made available to you. These reports will then be used to determine the profitability of each animal as compared to others in your herd.

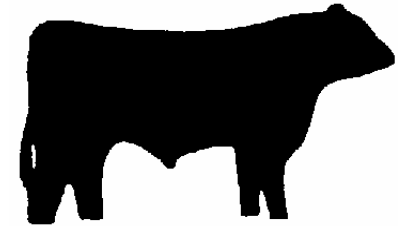
Special **Kattle Trail** marketing opportunities involving satellite sales, local sale barns and quality feedlots will be made available to you.

For additional information contact:

Sowder Seed Company
Min Mix Minerals
PO Box 95
Toronto, Kansas 66777
800-530-5442

jeff@minmixminerals.com
troy@minmixminerals.com

Kattle Trail



**Database for Herd
Management and
Tracking of Beef
Cattle using EID tags**

Sowder Seed Co.
Min Mix Minerals
800-530-5442
www.minmixminerals.com

Objectives:

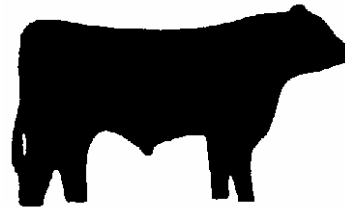
- Obtain a Premise ID Number for Customers
- Electronically Identify Cattle
- Assist with Herd Management
- Increase value of cattle when marketed
- Increase record-keeping capabilities

Levels of Marketing:

- I. Place an EID tag in the calf's ear
- II. **Level I** plus vaccinated with a IBR-BVD-PI₃-BRSV viral vaccine and 7- or 8-way clostridial/blackleg vaccine.
- III. **Level II** plus pre-conditioned at least 30 days.

Steps to increasing the value of your calf crop:

1. Contact a Sowder Seed Company / Min Mix Representative to enroll your herd.
2. Tag your cattle
3. Provide any information pertinent to your cattle.
4. Receive various informational queries about your cattle
5. Value added marketing opportunities.



Costs

**Min Mix Customer
\$5 per Head
\$0.25 per Head for
additional inputs**

**Non - Min Mix
Customer
\$7 per Head
\$0.50 per Head for
additional inputs**

Cost includes:

**EID Tag
Enrollment with Kattle Trail
One-time information input
Anytime Herd Queries**