



NE-30

A Nutritionally Engineered® Supplement Program for Cattle

THE PROGRAM

NE-30 is a Nutritionally Engineered®, mineral fortified supplement designed to complement late summer pastures or fair quality forages. The higher level of protein makes **NE-30** an ideal supplement for replacement heifers. This unique supplement is second to none when compared to other low-moisture blocks. This block is the product of a state-of-the-art-patented process that provides a unique 24-hour feeding system. **NE-30** is an exceptionally dense all-weather block that will give you the most for your money. Here's how:

- ✓ **Economical:** A low feeding rate of .50 to .75 lb/head/day means lower feeding costs (on a per head per day basis).
- ✓ **High Mineral Fortification:** These supplements are mineral fortified, eliminating the need for additional free-choice minerals, resulting in a feed cost savings of 5¢ to 8¢ per head per day.
- ✓ **Weather Resistant:** The patented, "continuous flow" system creates a quality, low-moisture, exceptionally dense block that maintains its integrity even in hot, humid weather or precipitation.
- ✓ **Minimal Labor:** **NE** supplements are easy to feed. Simply place the blocks in areas of easy access to the cattle.
- ✓ **Returnable Steel Tubs** are economical and environmentally friendly.

VITAMINS & MINERALS IN NE SUPPLEMENTS

Based on 3/4 lb intake, **NE-30** supplement is heavily fortified with vitamins A, D and E, and contains up to 125% of the new NRC nutrient requirements for trace minerals. Below are some of the reasons why vitamins and minerals supplied by **NE-30** supplement is necessary for optimum herd health and performance.

- ✓ **Copper** is required for reproductive performance. A significant symptom of copper deficiency includes delayed or suppressed estrus, along with reduced growth rate, fragile bones and anemia.
- ✓ **Manganese** is a necessary element of bone growth and skeletal development, as well as reproduction. Skeletal abnormalities such as weak bones and stiff joints are signs of deficiency, as well as poor reproductive performance and reduced conception rates in older cattle.

- ✓ **Potassium** is a critical component of electrolyte balance in the body. Potassium assists kidneys in maintaining the water balance, muscle contractions (including heart muscle function) and nerve impulse transmission. Forages tend to be excellent sources of potassium, with the best sources coming from early spring pastures that have not yet reached maturity.
- ✓ **Selenium** is necessary for tissue repair, normal function of the immune system, and reproductive performance. Selenium is interactive with vitamin E. A diet low in vitamin E may require an increase in selenium supplementation. A common symptom of deficiency is white muscle disease in young cattle characterized by lameness, stiffness, or cardiac failure.
- ✓ **Vitamin A** is required for growth, reproduction and maintenance; **vitamin D** affects calcium and phosphorus utilization and **vitamin E** helps to increase immune system function as well as interaction with the functions of selenium.
- ✓ **Zinc** is essential in the function of numerous enzymes. It is also needed for normal development and functioning of the immune system. Research has also shown that zinc is a requirement of the reproductive system. Stiff joints, skin lesions, reduced testicular growth, delayed puberty and abnormal estrus may be signs of a zinc deficiency.

THE NE PRODUCTS

NE-12, **NE-22** and **NE-30** may be fed in three stages, according to the level of protein needed to enhance the diet. (See feeding application chart below).

Step 1: NE-12 is a high energy supplement that should be fed during the early growth period of high quality pasture forages such as alfalfa, legumes, orchard, or brome grass to cows, calves, bulls, and stocker cattle.

Step 2: NE-22 contains additional protein appropriate for mid-to late-summer pastures or when grasses begin to set a seed head. **NE-22** is ideal when fed with fair quality prairie, fescue or coastal grasses.

Step 3: NE-30 is a high protein supplement ideally fed with stored forages or late-season pastures such as prairie, fescue or coastal grasses. **NE-30** is also ideal for dry pastures, corn stalk grazing, or whenever higher protein supplementation is desired. **NE-30** is also formulated for dairy and beef replacement heifers.

Feeding Applications			
← Forage Quality →			
Excellent 14% Protein or Higher NE-12	Good 10% to 14% Protein NE-22	Fair 8% to 10% Protein NE-30	Low 6% to 8% Protein Hi-Pro 40
Replacement Heifers			



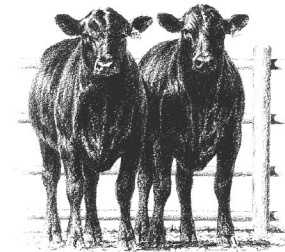
FEEDING DIRECTIONS

NE-30

Provide free choice as a supplement to pasture cattle at the rate of one block for each 15 to 25 head. Place a minimum of two blocks in each pasture near areas frequented by livestock, such as watering locations, shade or loafing areas. Cattle normally consume approximately 3/4 pound per head daily. Consumption may vary depending on climate, grazing conditions, condition of livestock and/or availability of other feeds. In situations where climate and/or other factors result in consumption less than 3/4 pound per head daily, intake of supplement can be increased by providing additional blocks per pasture.

Provide access to fresh water and free-choice salt at all times.

*If cattle experience excessive stress such as adverse weather conditions, shipping, weaning, or periods of high production, switching to **SmartLic® StressLic®** Supplement is recommended.*



GUARANTEED ANALYSIS

Crude Protein, minimum	30.0%	Copper, minimum	300 ppm
Crude Fat, minimum	5.0%	Iodine, minimum	15 ppm
Crude Fiber, maximum	2.0%	Manganese, minimum	1,200 ppm
Calcium, minimum	2.3%	Selenium, minimum	6.6 ppm
Calcium, maximum	2.8%	Zinc, minimum	1,200 ppm
Phosphorus, minimum	2.0%	Vitamin A, minimum	80,000 IU/lb
Potassium, minimum	2.5%	Vitamin D, minimum	8,000 IU/lb
Cobalt, minimum	3.0 ppm	Vitamin E, minimum	80 IU/lb

(This includes not more than 15% equivalent crude protein as non-protein nitrogen)

INGREDIENTS

Molasses, soybean meal, hydrolyzed feather meal, wheat middlings, hydrolyzed vegetable fat, monocalcium phosphate, dicalcium phosphate, urea, limestone, zinc sulfate, manganese sulfate, copper sulfate, sodium selenite, ethylenediamine dihydriodide, cobalt carbonate, vitamin A acetate, vitamin D₃ supplement, vitamin E supplement.

Manufactured By:



New Generation Feeds

11094 Business 212
Belle Fourche, SD 57717
Phone: 888-571-3421

For more information on **SmartLic®** Supplements and **New Generation Feeds** visit our web site at:

WWW.smartlic.com

CAUTION: Use as directed. Observe livestock and monitor intake daily.